

New Technology Implementation Guide

LGA Sustainable Public Lighting Forum



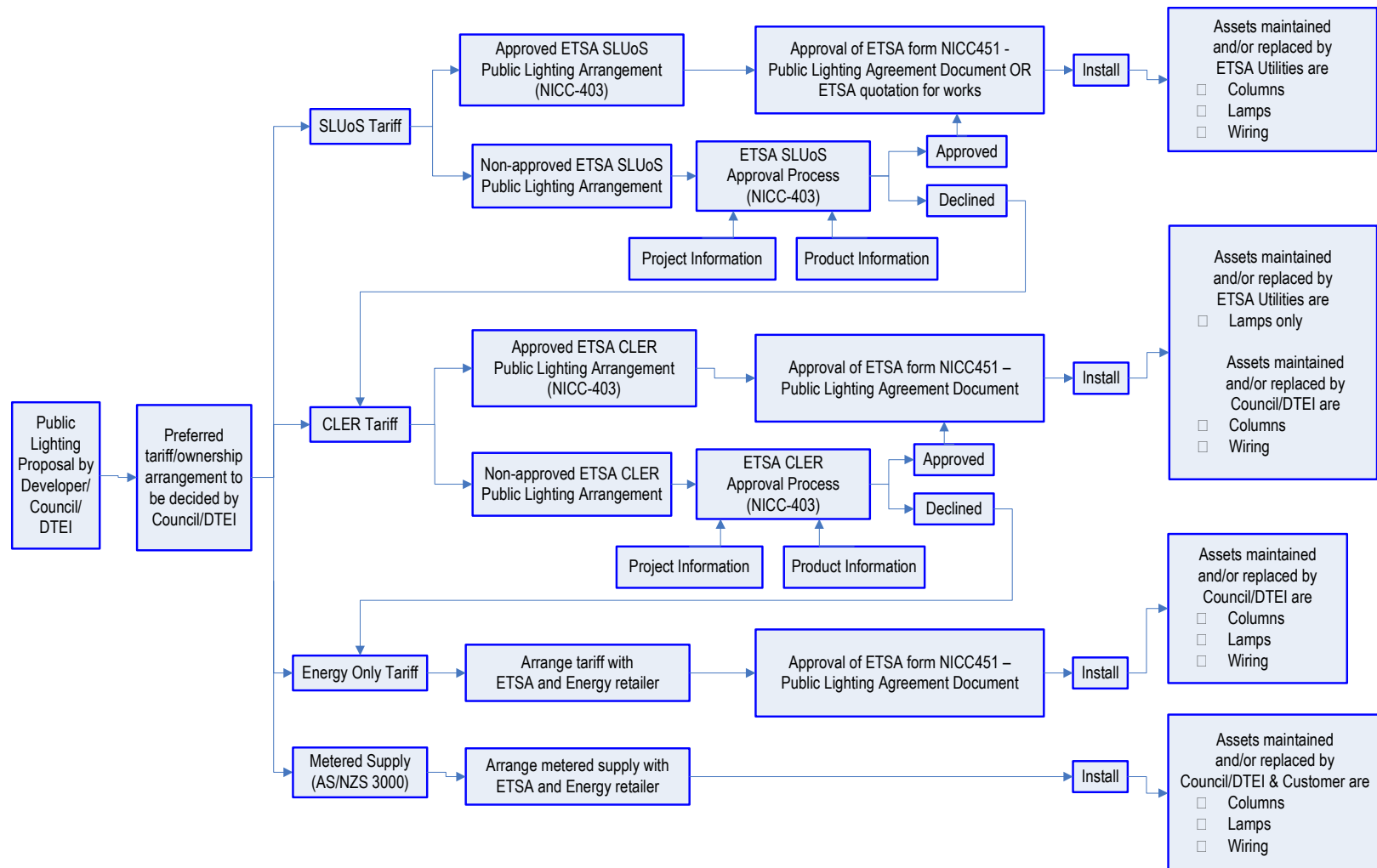
We do everything in our power to deliver yours

Process for new lights as SLUoS or CLER

- Application process now in our NICC-403.
http://www.etsautilities.com.au/public/download.jsp?id=482&page=/centric/news_information/network_information/public_lighting.jsp (some copies here today).
- ETSA continually considers alternative lights subject to technical parameters, costs, asset life and maintenance.
- With the growing alternatives coming to the market, ETSA will evaluate the products for general demand by Councils, DTEI and Developers, not a few lights as 'one offs'.
- Where technically acceptable and Councils wish to proceed on existing infrastructure, re-design of the lighting lay-out of at least entire streets or several blocks will be necessary and a significant financial contribution may be required.

Flow Chart for Public Lighting Request Procedure

FLOW CHART : Application Process for ETSA Utilities' consideration of Public Lighting requests



What is ETSA doing

- **In early 2009, we introduced 42W compact flouoro lights for poles and posts in new subdivisions both as SLUoS and CLER ie, Suburban Eco, Nostalgia.**
- **We are investigating various LED lights by a number of manufacturers; China, Japan, USA.**
- **We will be undertaking a trial of LEDs once we have found a product suitable for SLUoS offering.**
- **We will be open to requests for specialised 'top of the range' energy efficient lights where demand/numbers are high enough for ETSA to stock spares and councils wants the light as SLUoS, with an individual tariff to be negotiated.**