



**Local Government Association**  
of South Australia

# **SA Climate Ready Coasts**

**Stakeholder Webinar**

**8 September 2023**

# About today's webinar

1. Background to SA Climate Ready Coasts
2. Meet the team
3. Foundation Projects for 2023/24
4. Opportunities to get involved
5. Q &A



# Getting started

Please write into the chat:

**Why did you come along today – and what are you wanting to get out of the webinar?**



# 1. Background to SA Climate Ready Coasts



# Context – different coasts, different risks



Thursday, May 4, 2023

## Beach budget blues as regions struggle with storm impact

NEWS

“Annoyed” Kingston locals footing expensive repair bills from storms sweeping away South East beaches are calling for more of the funding and attention paid to Adelaide metropolitan coast to be directed to the regions, saying they feel “out of sight, out of mind”.



Belinda Willis

Support our work  
[Click here to donate](#)



<https://indaily.co/419552>

 [Print article](#)



Storms swept away sand dunes and threatened houses at Wyomi Beach near Kingston in 2016. Photo: Kingston District Council

# Context – different approaches to coastal adaptation

CoastSnap



The City of Marion is the first South Australian council to join the [CoastSnap](#) community beach monitoring initiative.

## Kangaroo Island Coastal Hazard Strategy

November 2018

Coastal Adaptation Plan

Prepared for



## Coastal Adaptation Study For City of Onkaparinga

Main Study Report

Robe Coastline Monitoring Roadmap



Southend Coastal Adaptation Strategy



**Holdfast Bay Coastal Adaptation Plan:**

**Stage 1 Stocktake and Engagement Strategy Summary**

# Program history

- Coastal and Estuarine Risk Mitigation Program - \$50M for “projects that reduce the impact of disasters on coastal communities”
- Calls from councils for a sector-wide project to progress coastal adaptation planning
- LGA, SACCA, former MSCC (now ACCN), DEW, Regional LGAs and a few councils collaborated on an application
- Successful funding application focused on capacity and data
- SA CPB and Local Government Research and Development Scheme have joined as funding partners

# Program outcomes

1. Coordinated and consistent approach to coastal adaptation
2. Improved understanding of coastal hazards and risk
3. Increased capacity and confidence to undertake coastal adaptation planning
4. Evidence-based decision making and investment in the coast.



# Moving towards Climate Ready Coasts



# Program plan

**Stage One - Foundations**

**July 2023 to June 2024**

**Hold  
point**

**Stage Two – Accelerate  
adaptation planning**

**July 2024- December 2025**

**Stage Three –  
Embedding**

**January – June 2026**

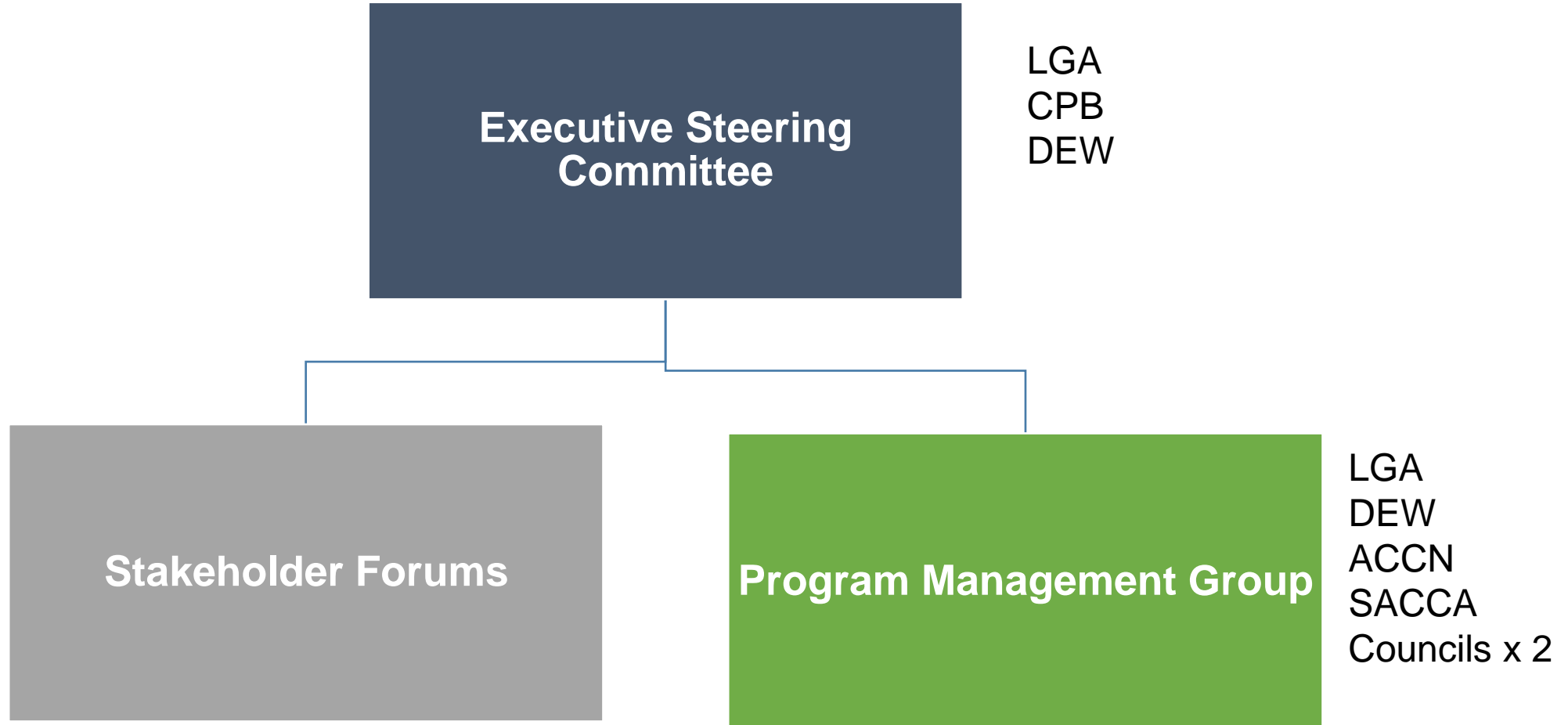
Capacity workstream led by the LGA

Data workstream led by DEW

## 2. Meet the Team



# Program governance



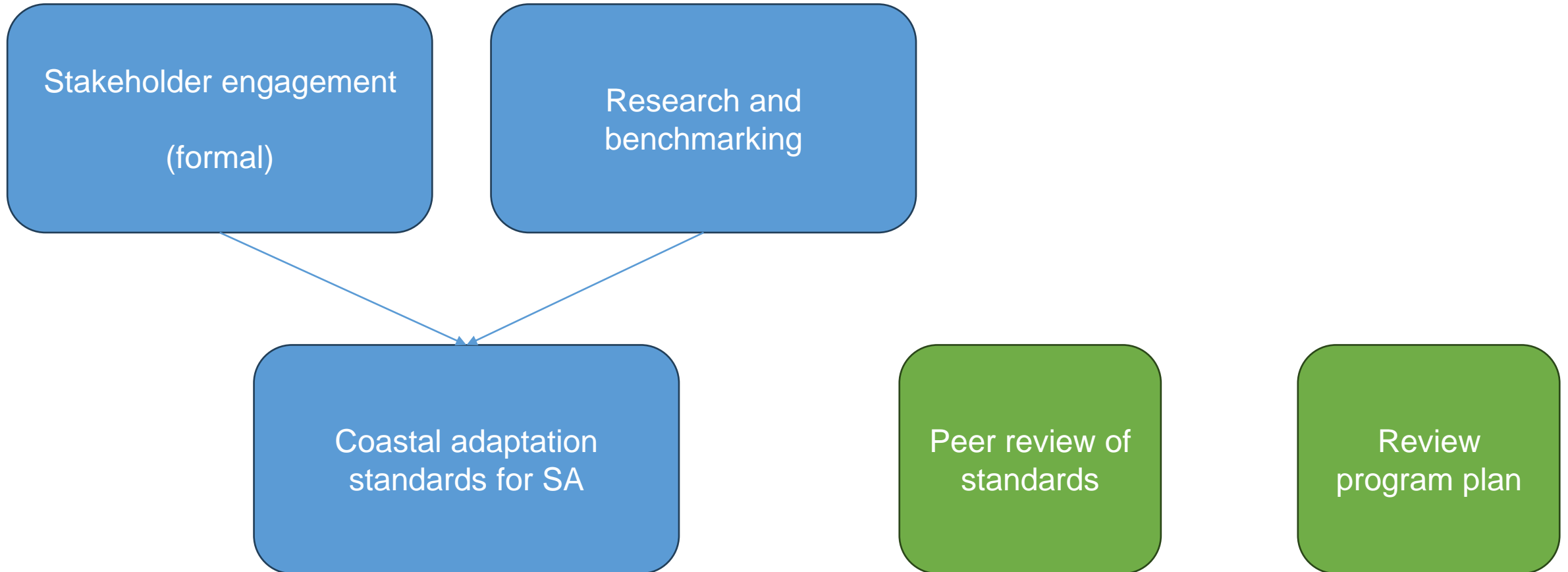
# Project Delivery

- Katherine Russell – LGA lead
- Michael Arman – Program Manager
- Nicole Pelton – Senior Project Officer, Climate Ready Coasts
- Sharie Detmar – Data Workstream Lead
- Annabel Sandery – Consultant Lead from Hatch

# 3. Foundation Projects for 2023/24



# Capacity Workstream



# Stakeholder engagement

## Why?

- Understand experiences
- Confirm exactly where each council and region is at
- Explore how standards could work
- Technical input into the standards
- Capture capacity needs

## How?

- Workshops in each region
- Follow-up engagement with each council
- State Government agency consultation



# Research and benchmarking

## Why?

- Ensure SA's approach to adaptation is evidence based
- Leverage experience from elsewhere – and learn from pitfalls

## Lines of enquiry

- Scope and definitions - what
- Methods and standards - how
- Governance and implementation
- Funding
- Liability
- Tools and resources

And more...

# Coastal adaptation standards

## Goals

- Strategic and evidence based approach – lift the bar for adaptation
- End-user in mind / simplicity
- Enable quality control
- Resolve the consistency / flexibility tensions
- Co-designed with end users
- Clear governance and implementation pathways

# Coastal adaptation standards

## Key components

- Coastal adaptation planning model for SA
- Methodological standards
- Prioritisation framework
- Tools and support resources
- Independently peer reviewed
- Maturity assessment of SA coastal councils against the standards

# Data Workstream

Data Stocktake

Wave Buoys

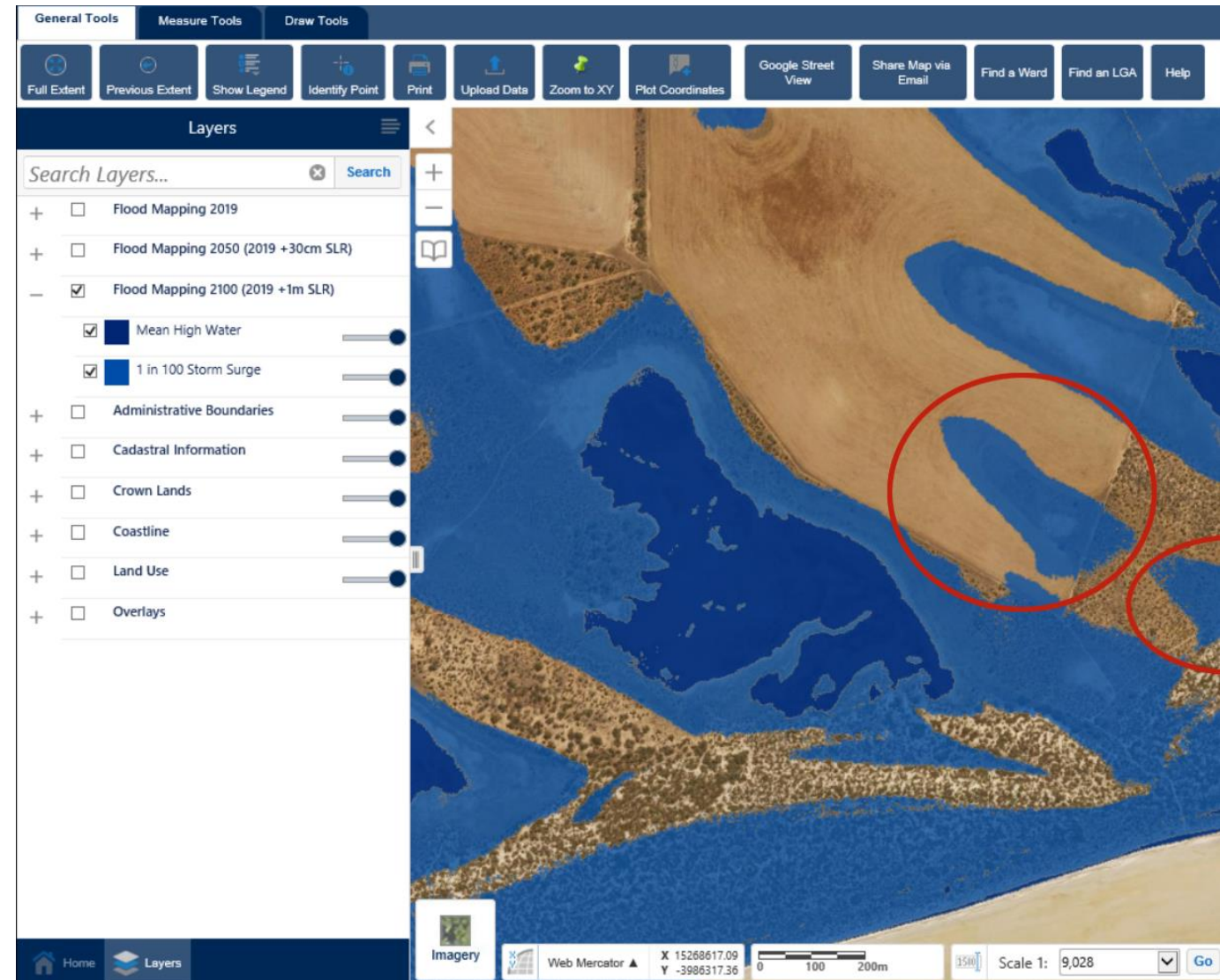
State-wide coastal  
inundation mapping

Sand drift hazard mapping

Coastal acid sulfate soils  
mapping hazard mapping

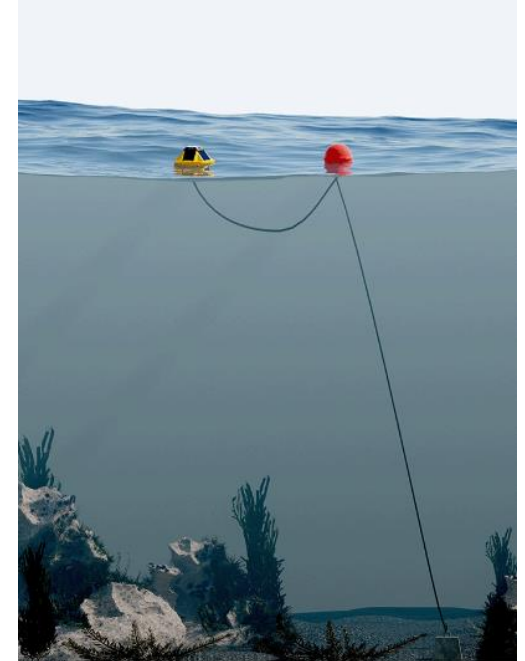
# Data stocktake

- Understand what's out there
- How its being used?
- How it could be used?
- Limitations, scale, restrictions, accuracy etc
- Inform data improvement priorities



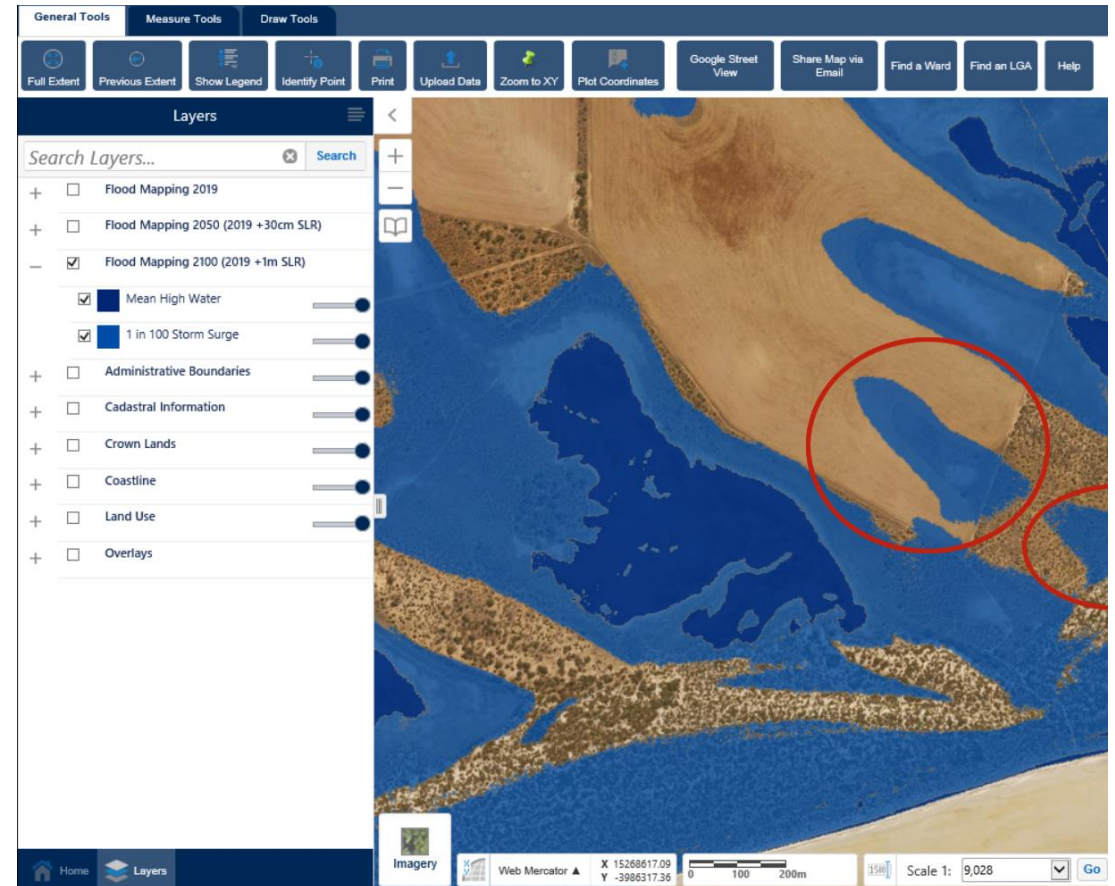
# Wave buoys

- Monitoring is critical to the overall coastal adaptation approach
- Wave dynamics data is critical to understanding erosion risk
- Part of efforts to develop integrated monitoring networks



# Coastal flood hazard mapping

- Bathtub mapping
- Previously completed for Limestone Coast and Eyre Peninsula
- Work underway for most other remaining areas



# Sand drift hazard mapping

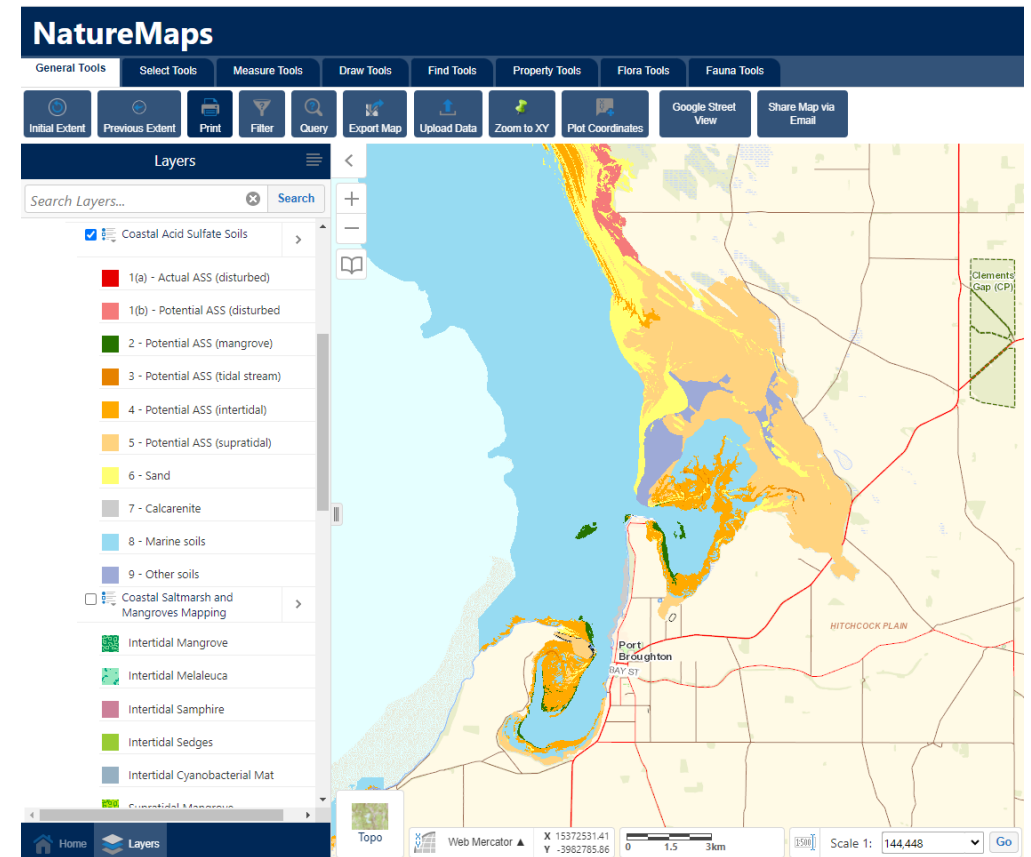
- Existing mapping is more than 20 years old
- Significant changes in sand drift in this time





# Coastal Acid Sulfate Soils hazard mapping

- Existing mapping is more than 20 years old
- Updated data important to understand changes



# 4. Opportunities to get involved



# Five 'asks' over the next few months

## Capacity workstream

- Regional Workshops
- Individual council follow-ups
- Consultation with State Government

## Data workstream

- Data stocktake request
- Targeted consultation to around the monitoring network

# Q & A



[climateredycoasts@lga.sa.gov.au](mailto:climateredycoasts@lga.sa.gov.au)

<https://www.lga.sa.gov.au/about/what-we-do/sa-climate-ready-coasts>